

Legend

- 1. Existing lake and aeration pump
- 2. Proposed seating areas
- 3. Bird nesting areas
- 4. Drainage swale
- 5. Fringe lake vegetation
- 6. Proposed playground area
- 7. Proposed path connection
- 8. Existing pergola
- 9. Existing bushland
- 10. Water Corporation easement
- 11. Water Corporation land
- 12. Coles supermarket (rear)

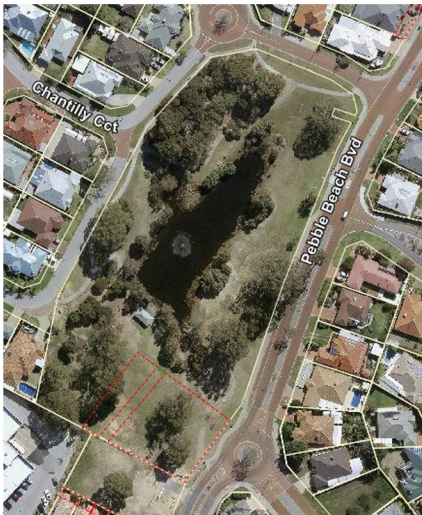
 New tree

Planned upgrade of Park

The plan is to upgrade the park in May 2020.

Design intent

- The intent is to:
- preserve and enhance the lake and its ecosystem
 - maintain the overall feel of the park as a relaxing place to walk around and enjoy nature
 - beautify the park by planting more native trees, shrubs and ground covers
 - improve access i.e. extend the shared path from the road to the shelter
 - improve shade amenity across the park
 - provide more seating
 - install a playground.
 - improve the water quality of the lake
 - create more habitat and food for the waterbirds



Location Map



LANDSCAPE MASTERPLAN DRAFT